



PO Box 265 Troy PA 16947 / 231 Gate #2 Lane, Alparon Park, Troy PA 570-297-3410

<https://theheritagevillage.org/pa-heritage-festival> contact us: heritagevillage231@gmail.com

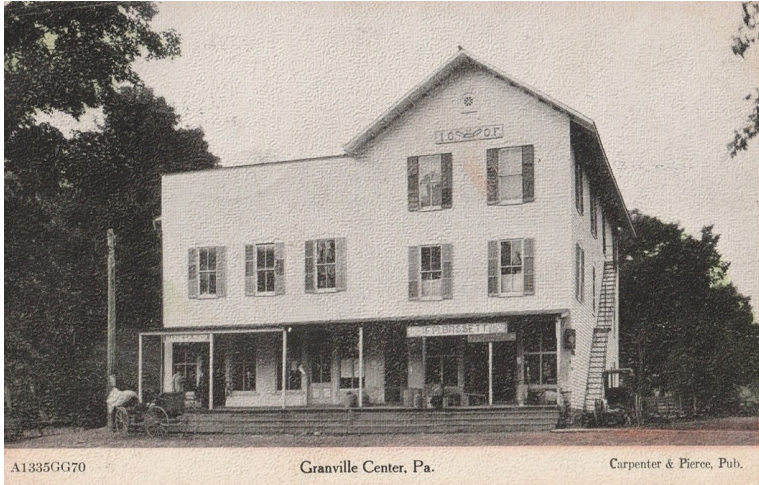
BCHA Party Line Volume 13 Issue 10 October 2023

We lost a dear friend recently, Bruce Staudt. Bruce was instrumental in the founding and growth of the Heritage Village and Farm Museum. Serving on the Executive Board and involved in the many projects and events.



Closing for the season Tues Oct 31.

This year is a celebration of our **Country Stores** and are pleased to bring you stories researched and written by Dave Lenington



F. M. Bassett General Store, Independent Order of Odd Fellows, Granville Center, Pennsylvania, Postmark 1908

The three-story portion of the above building was constructed in 1888-89 “as a meeting place” for “the Independent Order of Odd Fellows Lodge No. 687” and Lady Rebekahs. A general store opened about a year later on the first floor.

In 1892 a severe windstorm damaged the building.

The “two-story wing was added” on the left side “to strengthen the structure.” A harness shop on the left side in the above photo closed in 1928. The opera house and dance hall were located on the second floor of the addition.

A barber shop, located in the back portion of the building, closed in the early 1930s. Voting booths were later located in this section.

The building housed the post office until it relocated to Granville Summit around 1918.

Opera House “Home talent plays ... staged in the Opera House over the Memorial Day” holiday became a family tradition over ... many years.” The last show took place on Memorial Day in 1960.

General Store Granville Center had two general stores. The above store had a number of owners over its seventy-two year history. The inventory included “groceries, hardware, clothing, candy, yard goods, and thread....”

J. R. Smith purchased the store in 1927. His daughter, Ruth, helped as a clerk. “When she married William Kinney in 1940,” she and her husband lived “in the second floor apartment above the store.”



There is going to be a new addition to the Heritage Village and Farm Museum! Construction of a wooden silo began on October 3rd. The silo will be attached to the Farm Museum creating a walk-through exhibit for touring guests as they proceed to the Heritage Village.

Wooden silos have a history in America dating back to the 19th century. Though, the concept of a silo is not new. The word silo comes from the Latin word “silus,” meaning cellar. Silos have since progressed to become the towers we recognize today. The first wooden silo was built in America in Spring Grove Illinois in 1873. The design quickly spread to farms across the country in the late 19th and the 20th centuries. Silos can be spotted across our county; these are the inspiration for the new exhibit.

The silo, donated by Pauline Swingle, will be completely reconstructed for the exhibit; it is dated to the early 20th century. Inside, will showcase photos of silos from farms across Bradford County. This silo stood on the farm in Alba for decades, and now it will serve as a reminder of farming history at the Heritage Village and Farm Museum.

The goal is for the construction of the silo to be finished by fall of this year, while the exhibit will be ready for tours in 2024. Volunteers are working hard to meet that goal. The new silo will be an exciting addition to the museum, its towering structure is sure to draw attention, along with the exhibit celebrating local farms. Look out for information about the project, it is sure to be an interesting process! Kate Montgomery, MSU Intern

Upcoming Events



Tuesdays 6PM
October 3, 2023 – April 30, 2024

Cost \$5 a person, 50% Museum / 50% Winning Team

Teams up to 6 players, no team? come anyway,
join a team in need of a player.

Bring your own snacks and drink.

(Ample parking, no steps, heat, bathrooms, well lit)

This fun event follows the Big Pond Trivia Night format with some interesting twists

Each week will feature a mystery object for identification, check out the selected exhibit wherein lies an answer to a question, the wooden nickle prize will connect to one of the trivia questions, and the museum will have tables of items for sale. yard, estate, seasonal items and books.



In the event of inclement weather we will follow the Troy School District guidelines: School Delay– Yes Trivia,
Early dismissal or school cancellation- No Trivia.



In the United States, a **wooden nickel** is a wooden token coin, usually issued by a merchant or bank as a promotion, sometimes redeemable for a specific item such as a drink.

Scrip and tokens have often been issued locally in times of severe economic distress such as financial crises and the Civil War. During the Great Depression, after the failure of the Citizens Bank of Tenino in Tenino, Washington, the local Chamber of Commerce teamed up with the local newspaper to issue scrip equivalent to 25% of people's bank deposits that could be spent at local merchants. Blaine, Washington, soon did the same with both flat scrip and, in response to requests generated by news and word of mouth, coins that included a 5-cent piece. The Chicago World's Fair in 1933 issued wooden nickels as souvenirs, and the tradition of wooden nickels as tokens and souvenirs continues to the present day. Wikipedia

Examples of 'Wooden Nickle' prizes:



Dime-on Pin

All make for a funny Gag Gift



Person's Picture

Outstanding in Your Field Award
Person's Name



Persons picture

Missing

Age ___ in dog years

" " as he is known
by his dam few friends

Was last seen

Mumbling disgruntled sounds about



Woman's Tool Kit



The Heritage Village and Farm Museum

Garage Sale

Alparon Park

Exhibit Hall

Saturday Nov 4 8AM-1PM

Wide variety of everyday items and a



Don't miss our Fill-a-Bag table,
for \$5 fill a bag

Christmas in the Village

Sunday December 3th 11AM- 3PM

Free Admission

Holiday Bake Sale, Unique gifts,
craft vendors, Santa & Mrs. Clause.
holiday music,

Story time with Mrs. Clause,

Free Kids Crafts, Free Refreshments

The public is invited to the next
BCHA Board meeting
Wednesday November 15, 1PM
at the Museum

Trivia Mystery Items-



Made of metal, 1.5 inches in diameter, has a liquid inside, inscribed 'Silverice'.



It is made of strong metal, 7 x1.5 inches.