



PO Box 265 Troy PA 16947 / 231 Gate #2 Lane, Alparon Park, Troy PA 570-297-3410

<https://theheritagevillage.org/pa-heritage-festival> contact us: [heritagevillage231@gmail.com](mailto:heritagevillage231@gmail.com)

## BCHA Party Line Volume 13 Issue 6 June 2023

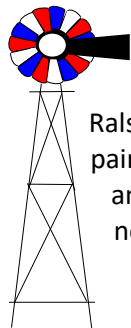
The museum is now open for the season, Tuesdays and Saturdays 11AM-3PM and by appointment.



The inside community space was in use for Trivia night, thank you to the folks who came. The evening included a tour of the newest exhibit, our General Store. The window is from the Troy Post Office, VanDyne building era.



Work has begun on this year's major projects, additions of a wooden silo and a windmill. The wooden silo, donated by Pauline Swingle, toppled several years ago from a barn just south of Alba. To be erected at the north end of the main museum building, visitors will have to pass through the silo to continue to the Heritage Village, inside the silo will be pictures and history of area silos.



The windmill, donated by Red Run Rod and Gun Club in Ralston, PA has been repaired and painted an eye catching red, white and blue will be erected on the north-east end of the museum building.



## Troy Town Band Concert & Ice Cream Social

Thursday July 20, 6:30 PM, Heritage Village



This year is a celebration of our **Country Stores** and are pleased to bring you stories researched and written by Dave Lenington and Chelsea Wagner.

### The Start of General Stores By C. R. Wagner

According to Dr. Marcella M. Hyde, in her book *Bradford County: The Story of its People*, the early settlers to Bradford County came from New England. They came by wagon, sled and horse; sometimes even on foot. They brought as much as they could carry to enable them to start a new life.

Their first “homes” were huts made from natural found materials – brush, branches and leaves. Families lived in these while the father cut trees for logs to build cabins.

Settlers cleared small areas to plant corn, which was their main food, along with anything they hunted and fished. Eventually these early farmers grew pumpkins, onions and peppers. They planted apple and peach trees.

Without refrigeration, food was dried to preserve it. Sugar and salt were scarce commodities.

People took care of the clothing they brought with them to make them last as long as possible. When those wore out, they started making and wearing clothing from the leather and furs of the animals they hunted.

Basically, farmers grew or made everything they needed.

As more settlers came, these early farmers began bartering. Eventually establishments of general stores were built, creating small villages where settlers could bring their goods to trade for the things they couldn't grow or make themselves.

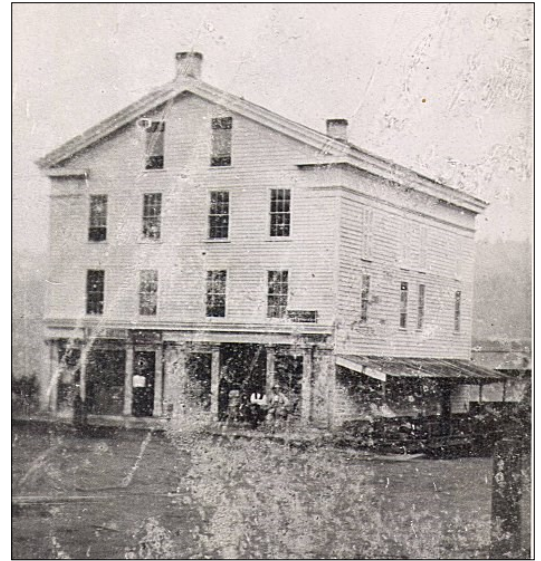
The first general store in Bradford County was built in 1784 at Tioga Point near Athens. It was built by Matthias Hollenback. He carried dry goods and groceries. Mail was sent there, eventually getting to the right receivers.

Settlers would come to Hollenback's from all over the county several times a year to trade their extra products for needed supplies. They were able to relax, enjoy the company of other settlers, hear the latest news and collect their mail.

By the late 1800's there were general stores in Canton that were run in a trading post manner – products were traded and shopkeepers kept a record of credit.

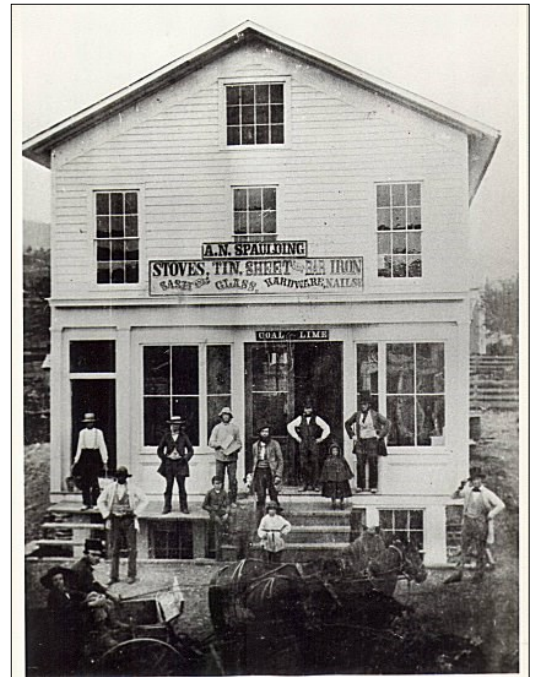
Troy's general store, run by A.L. Rolison & Son was centrally located on Main Street.

East Smithfield has a long history of businesses. In 1825 James Gerould was the first post master in the building that is the hardware store today. In the 1850's a match factory on Water Street was run by the Walrod Family. There was a woodturning and cabinet shop run by Joe Knickerbocker and Will Riggs. Reverend Cross made repairs to watches and clocks in his home. William Moody had a wagon repair and paint shop. Several dressmakers and milliners worked out of their homes. There were also several blacksmith shops. Around 1850 two of Dana Forest's sons started a “manufactory” where they made many kinds of agricultural tools and implements such as plows, cultivators, rakes, and iron parts for wagons and sleighs. As other general stores were started for trading purposes, villages grew around them to become the thriving communities we have today.



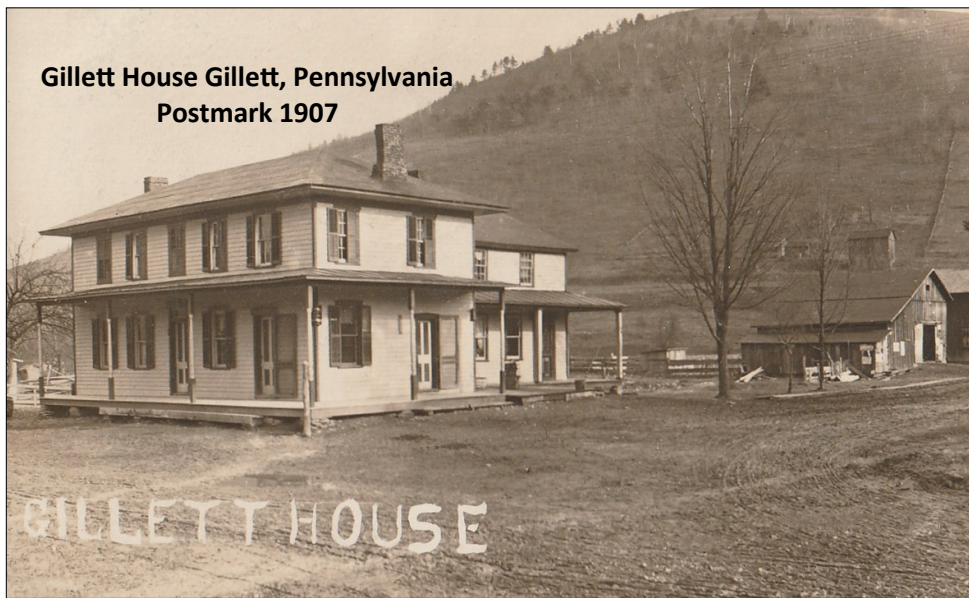
Delivery wagon of an early merchant

73





**Gillett House Gillett, Pennsylvania  
Postmark 1907**



The village of Gillett was named in honor of Asa Gillett. Mr. Gillett purchased the hotel which later was owned and operated by his son, John. The hotel was a stage coach stop and eventually served as the post office. The hotel, located on the corner of what now is Route 14 and the Thompson Hill Road, burned in 1914.

Dave Lenington

## Do You Remember...



Paper horse & rider with accessories  
donated by Barbara Barrett



Miss Tasty Freeze souvenir  
doll of the 1950's donated by  
Marie Seymour

Puppet  
Jimmie the  
cricket  
Donor-  
Millie  
VanBlarcom  
Estate



## Yarnin'

One thing I hate is tellin' yarns  
Such as some fellers do.  
They tell you great big whopping' ones,  
An' swear that they are true

One Feller told about his dog  
That had a nose so keen,  
He trailed a coon in thirty-one  
That died in seventeen.

But, when you tell 'em some real facts  
They jus' sit there an' grin:  
They don't believe a word you say,  
They think your story's "thin".

Like when I told about my cat,  
(So smart you never saw.)  
She was so high class toney like.  
She wouldn't eat things raw.

No sir! I had to cook her food,  
From milk right up to meat;  
An' if I didn't cook it good,  
By gum, She wouldn't eat!

I drew the line the day she come  
A 'running to the house.  
Yes sir! I drew the line that day—  
I wouldn't cook no mouse!

She sat around real sad an' glum  
Like some poor homeless pup,  
Until she heard the thunder roll;  
Boy! Then she brightened up!

She grabbed the mouse, an' up a tree  
An' jumped onto the house;  
She ran up to a lightning' rod,  
An' there she hung the mouse.

She backed into a corner then,  
An' calmy settled down,  
Until a bolt o' lightning' struck  
An cooked her dinner brown.

That's why I hate their tellin' yarns,  
Because the ones that do,  
When I jus' tell 'em simple facts  
Think I am yarnin' too.

John Neighbor



# PENNSYLVANIA HERITAGE FESTIVAL

SEPTEMBER 16 & 17, 2023

SATURDAY 10 A.M. - 5 P.M. & SUNDAY 10 A.M. - 4 P.M.

\* FREE ADMISSION - BRING THE WHOLE FAMILY \*

CRAFTS, FLEA MARKET,  
AND DIRECT SALES

HANDS ON CHILDREN'S ACTIVITIES

LARGE LOCAL ARTIFACT COLLECTION

Route 6 Maker's Market



Meet Artisans & Craftspeople  
at the PA Heritage Festival

Sponsored By:



PA ROUTE 6 ARTISAN TRAIL



Endless Mountains  
Heritage Region

Hosted by the  
Heritage Village  
& Farm Museum  
of Troy, PA



Living History  
Demonstrations



Civil War Reenactments,  
Encampment & more!

FREE  
ADMISSION  
TO FESTIVAL!

WHILE YOU'RE AT THE FESTIVAL  
ENJOY THE HERITAGE VILLAGE

Museum Open May-Oct. • Tues & Sat 11am - 3pm  
Admission Fee Charged To Enter Museum

Alparon Park, 231 Gate 2 Lane  
TROY, PENNSYLVANIA

Located a half mile north of the intersection of Routes 6 & 14 in Troy, PA.  
Visitors should enter Alparon Park Gate 2.

570-297-3410 • heritagevillage231@gmail.com



Funded in part by The Bradford County Room Tax Grant. Only Service Dogs allowed on the grounds.  
\*All pictures shown are for illustration purpose only.



Alparon Park, 231 Gate 2 Lane  
TROY, PENNSYLVANIA

Located a half mile north of the intersection of Routes 6 & 14 in Troy, PA.  
Visitors should enter Alparon Park Gate 2.

570-297-3410 • heritagevillage231@gmail.com



Funded in part by The Bradford County Room Tax Grant. Only Service Dogs allowed on the grounds.  
\*All pictures shown are for illustration purpose only.

<https://theheritagevillage.org/pa-heritage-festival>

Volunteers, Demonstrators, Maker's Market, Direct Sales, Flea Market Vendors,  
Non-Profits promoting their mission, Vendor application attached to this newsletter.

Invite to volunteer- attached to this newsletter

Please respond to Barbara Barrett bbarrett362@comcast.net

309 W Keller St. Lock Haven PA 17745

You are!  
Invited!